

4WPSv2



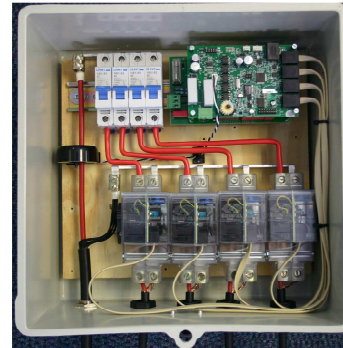
The 4-Way Pole Mount Split Meter Version 2 (4WPSv2) services up to four split Energy Meters. It has the ability to measure the total input current to the 4 consumers, and can be programmed with a total safety summation current limit for the box. The footprint is small at 300x300 mm.

The core components of the 4WPSv2 are the following:

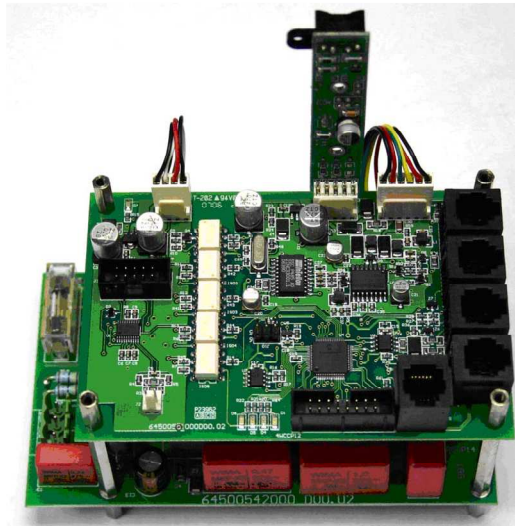
- Bi-directional PLC to RS485 modem
- Power supply for the modem, Smart Energy Meter and IM001
- Smart Energy Meter to measure total incoming current, supply voltage and energy
- Circuit Breakers at the required rating
- Four Single Phase Energy Meters (IM001)
- Door tamper detect switch
- Diagnostic port for maintenance and commissioning

Compliance

- SANS 1524-1 2005
- IEC 62052-11
- IEC 62053-21



4WCC & 4WPSU



4WPSv2 Block Diagram

